

# Martinez

## *Project Overview*

- **265 Trees**
- **241 Brush Units**



**RW\_V\_4619\_14**

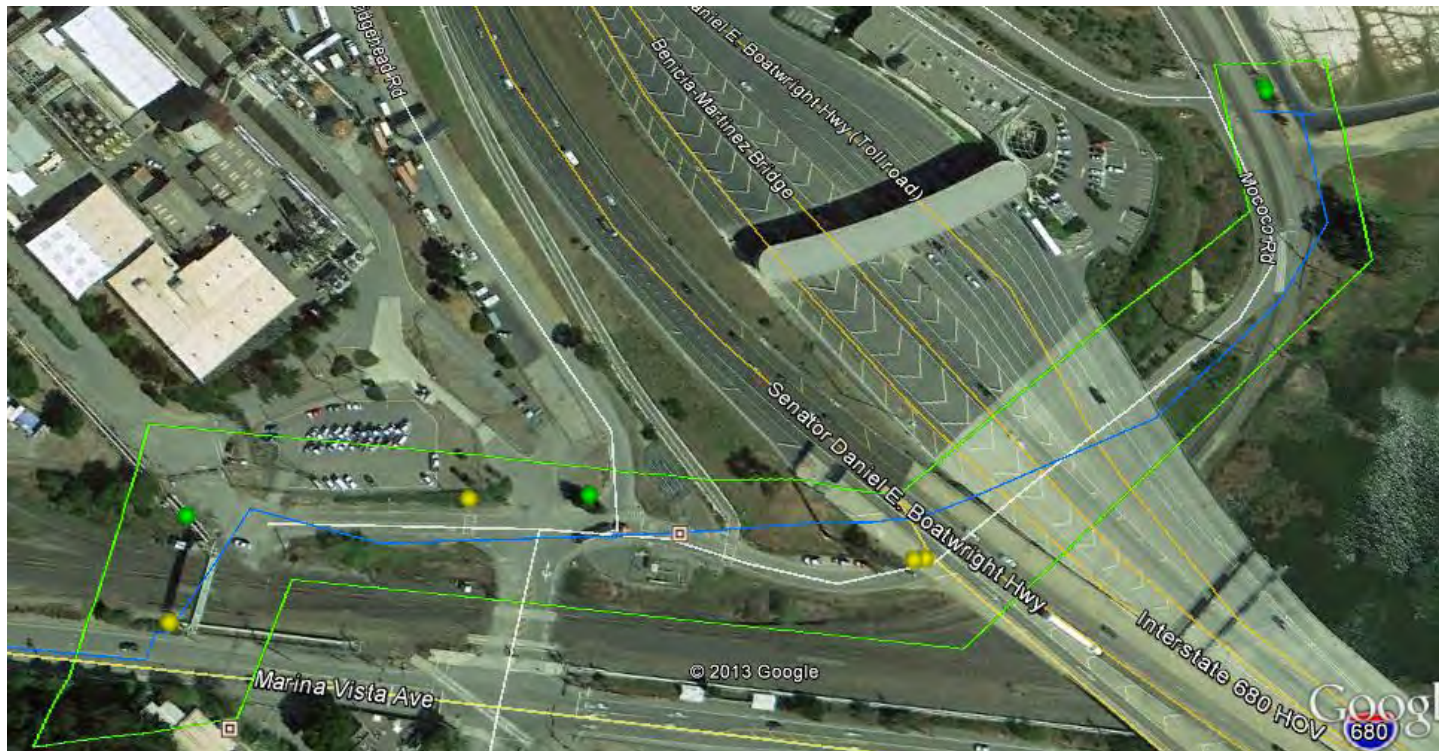
**Project Location:** Mococo Road on either side of 680.

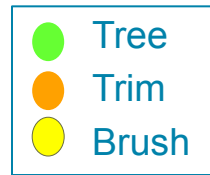
**Area Description:** Trees and brush buffering industrial area and 680.

**Scope of Work:** Removal of trees and brush unit. Traffic control needed.

**Equipment Needed:**

**Removals:** 4 trees, 4 units of brush.





RW\_V\_4626\_14

**Project Location:** Shell Ave. south of Mococo Rd.

**Area Description:** Trees buffering property and road.

**Scope of Work:** Removal of trees. Traffic control needed.

**Equipment Needed:**

**Removals:** 2 trees.







## RW\_V\_4597\_14

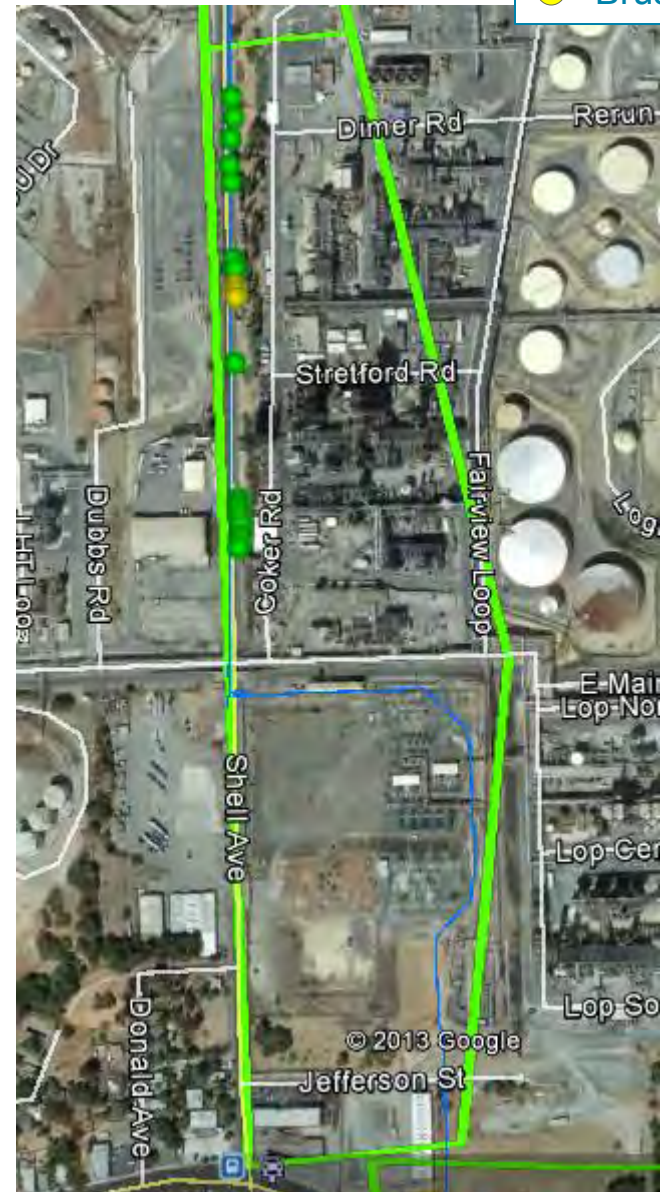
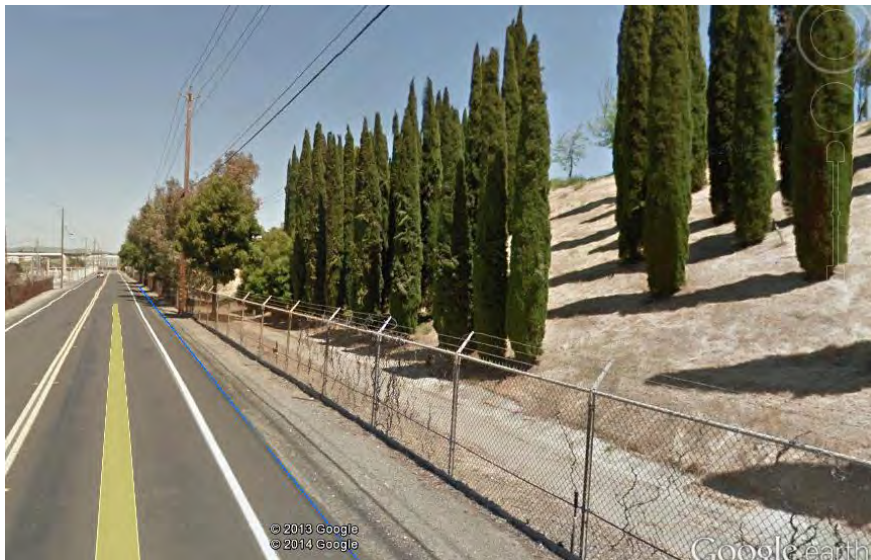
**Project Location:** Just south of RW\_V\_4619\_14 on Shell Ave.

**Area Description:** Trees and brush units to be removed buffering industrial complex and road.

**Scope of Work:** Removal of trees and brush units. Traffic control needed.

**Equipment Needed:**

**Removals:** 16 trees, 3 units of brush.



- Tree
- Trim
- Brush



- Tree
- Trim
- Brush

## RW\_V\_4599\_14

**Project Location:** Pacheco Blvd.  
between Peach St. and Howe St.

**Area Description:** Trees and brush  
buffering Pacheco Blvd. and  
industrial area.

**Scope of Work:** Removal of trees  
and brush.

**Equipment Needed:**

**Removals:** 9 trees, 5 units of  
brush.





## RW\_V\_4598\_14

**Project Location:** Pacheco Blvd. between Howe St. and Refinery Rd.

**Area Description:** Trees and brush for removal and trimming on property landscaping.

**Scope of Work:** Removal of trees and brush. Traffic control needed.

**Equipment Needed:**

**Removals:** 37 trees, 72 units of brush.



## RW\_V\_4622\_14

**Project Location:** Shell Ave., just east of Harbor View Dr.

**Area Description:** Trees and brush for removal buffering road.

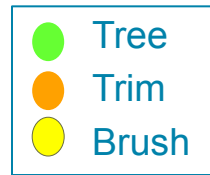
**Scope of Work:** Removal of trees and brush, traffic control needed.

**Equipment Needed:**

**Removals:** 1 tree, 4 units of brush.







**RW\_V\_4608\_14**

**Project Location:** Between Shell Ave. and Sabral Circ.

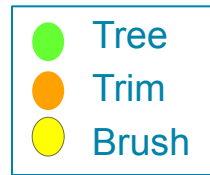
**Scope of Work:** Removal of trees and brush, along with tree trimming.

**Equipment Needed:**

**Removals:** 22 trees, 3 tree trims, 16 units of brush, 1 tree trim.







## RW\_V\_4596\_14

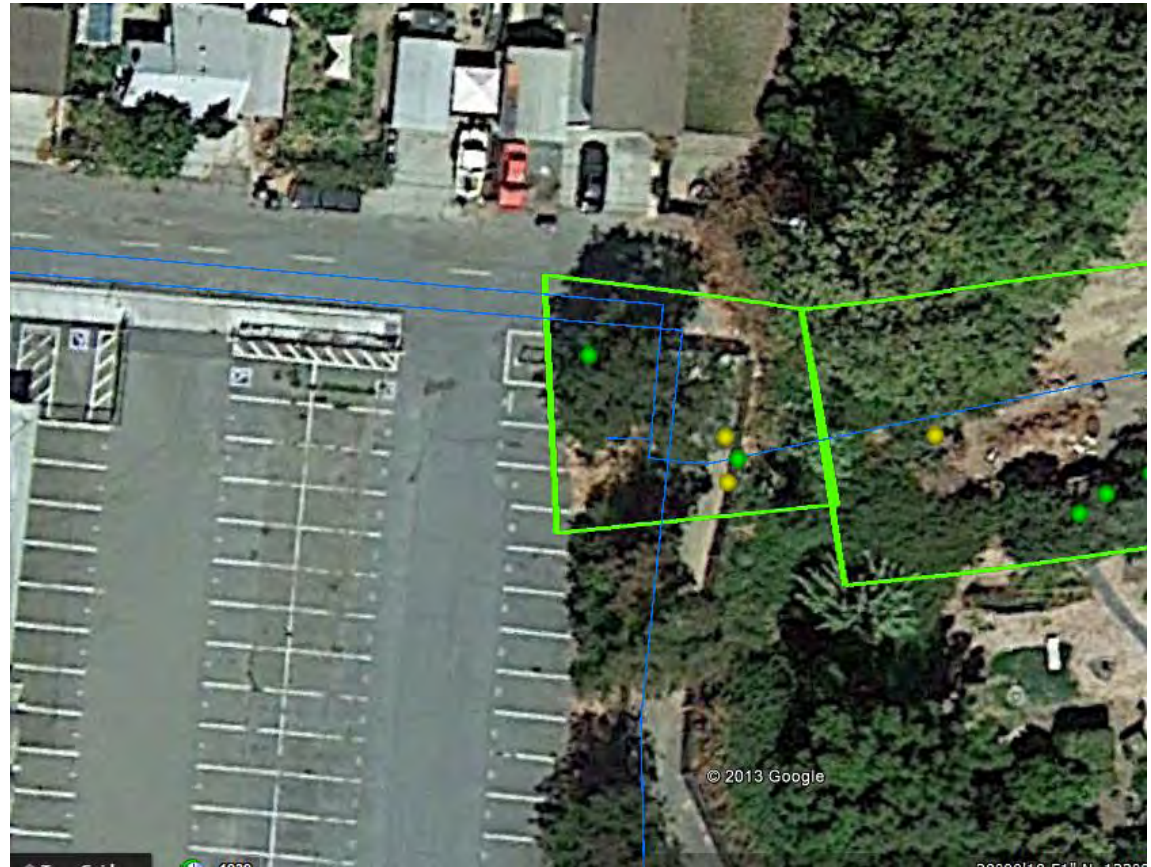
**Project Location:** Adjacent to RW\_V\_4608\_14, by creek behind valve station.

**Area Description:** Trees and brush units for removal.

**Scope of Work:** Tree and brush removal.

**Equipment Needed:**

**Removals:** 2 trees, 2 brush units.





## RW\_V\_4616\_14

**Project Location:** C St. just west of Alhambra Ave. and Alhambra Middle School.

**Area Description:** Trees for removal on sidewalk landscape.

**Scope of Work:** Tree removal.  
Traffic control needed.

**Equipment Needed:**

**Removals:** 5 trees.





**RW\_V\_4606\_14**

**Project Location:** Private property at the end of Duncan St.

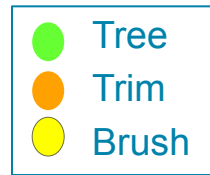
**Area Description:** Trees and brush units for trimming and removal.

**Scope of Work:** Tree and brush removal and trimming.

**Equipment Needed:**

**Removals:** 9 trees, 10 brush units, 4 tree trims.





## RW\_V\_4603\_14

**Project Location:** UC Davis Health System on Muir Road.

**Area Description:** Trees and brush units for removal and trimming buffering property and road.

**Scope of Work:** Tree and brush unit removal and trimming. Traffic control needed.

**Equipment Needed:**

**Removals:** 5 trees, 17 brush units, 1 tree trim.





## RW\_V\_4602\_14

**Project Location:**  
Shopping center on  
Muir Station Road  
and Center Ave.

**Area Description:**  
Trees for removal  
bordering property  
and road.

**Scope of Work:**  
Trees for removal.  
Traffic control  
needed.

**Equipment Needed:**  
**Removals:** 11 trees.





## RW\_V\_4601\_14

**Project Location:** Muir Station Road just southwest of RW\_V\_4602\_14

**Area Description:** Trees for trimming and removal along road.

**Scope of Work:** Trees for removal and trimming. Traffic control needed.

**Equipment Needed:**

**Removals:** 2 trees for removal, 3 for trimming.





## RW\_V\_4600\_14

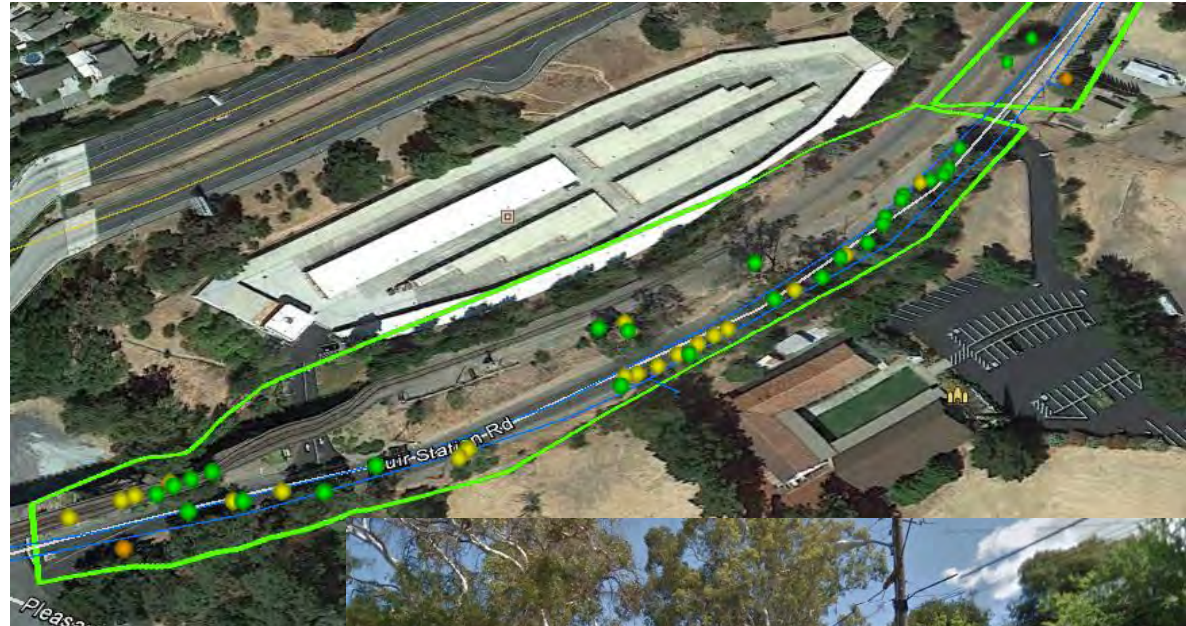
**Project Location:** Muir Station Road by Grace Episcopal Church across from Security Public Storage.

**Area Description:** Trees and brush units for removal and trimming bordering road.

**Scope of Work:** Trees for removal and trimming. Traffic control needed.

**Equipment Needed:**

**Removals:** 26 trees for removal, 18 units of brush for removal, 1 tree for trimming.





## RW\_V\_4604\_14

**Project Location:** Alhambra Way from Muir Station Road to John Muir Parkway.

**Area Description:** Trees and brush units for removal bordering road and along underpass.

**Scope of Work:** Trees and brush units for removal. Traffic control needed.

**Equipment Needed:**

**Removals:** 6 trees, 4 units of brush.





## RW\_V\_4611\_14

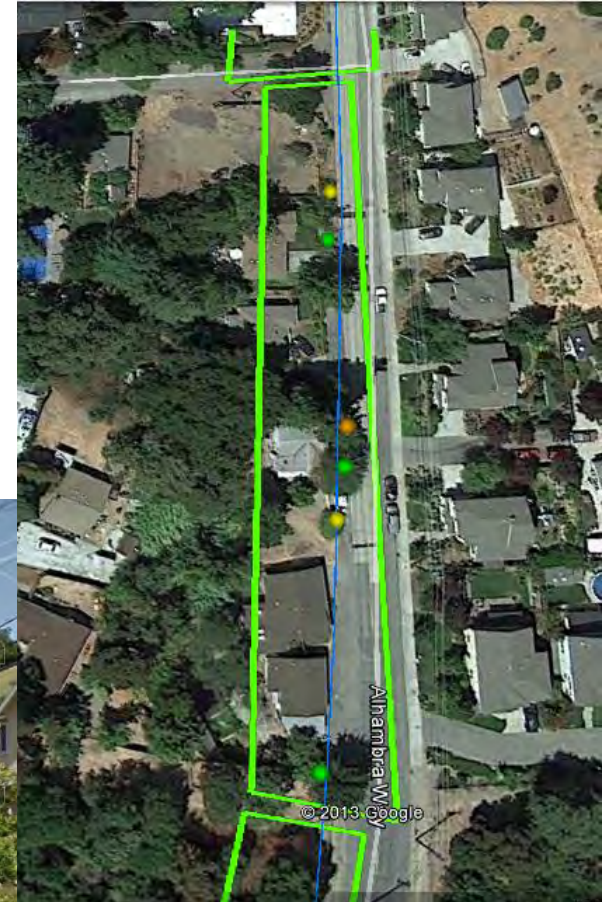
**Project Location:** From 4344 Alhambra Way to Walnut Ave.

**Area Description:** Trees and brush units for removal and trimming along residential property.

**Scope of Work:** Trees and brush units for removal. Traffic control needed.

**Equipment Needed:**

**Removals:** 3 trees, 2 units of brush, 1 tree trim.





## RW\_V\_4614\_14

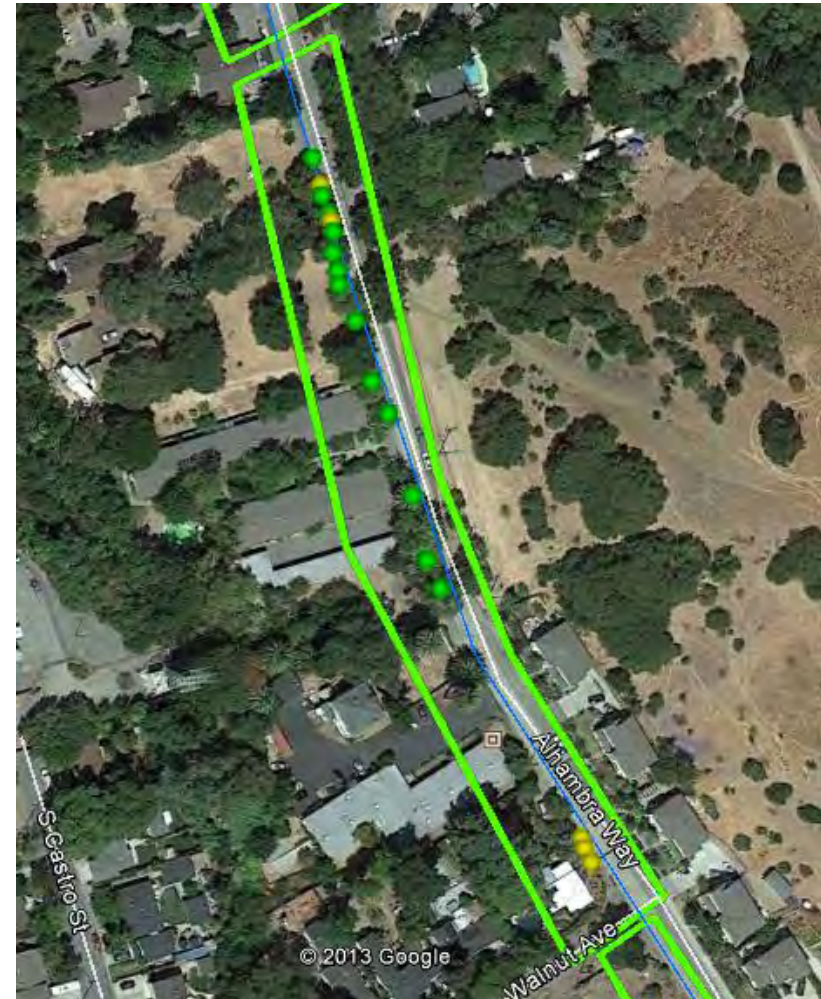
**Project Location:** Alhambra Way from Walnut Ave to approximately 3989 Alhambra Way.

**Area Description:** Trees and brush units for along residential property.

**Scope of Work:** Trees and brush units for removal. Traffic control needed.

**Equipment Needed:**

**Removals:** 13 trees, 5 units of brush.







## RW\_V\_4612\_14

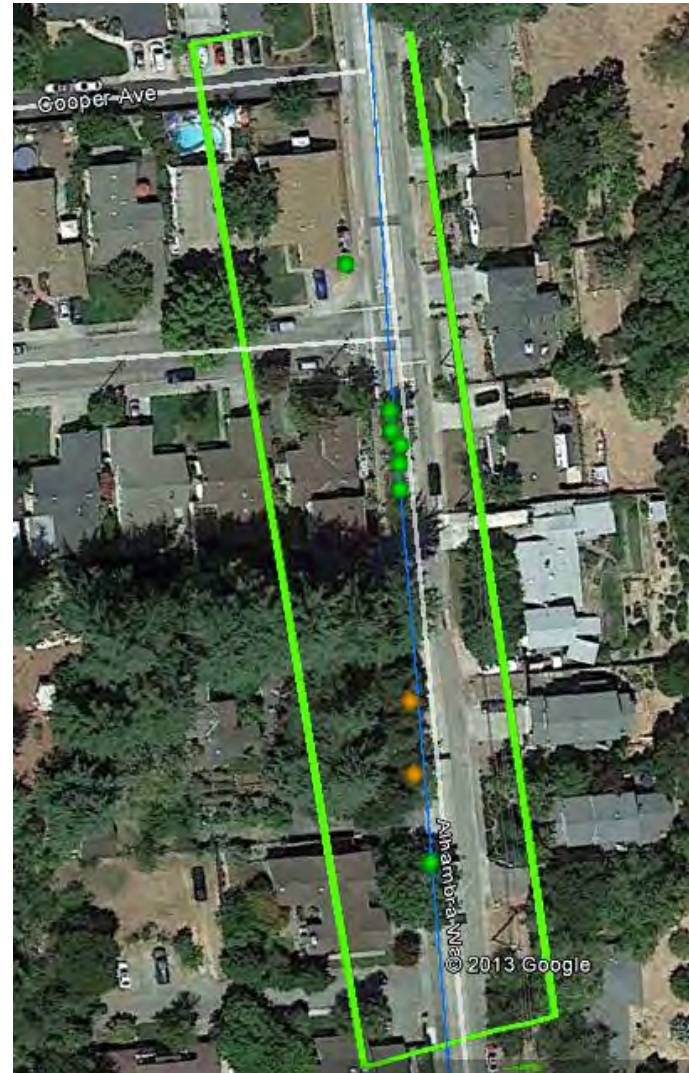
**Project Location:** From approximately 3971 Alhambra to Cooper Ave.

**Area Description:** Trees along residential property.

**Scope of Work:** Trees for removal and trimming. Traffic control needed.

**Equipment Needed:**

**Removals:** 7 trees, 2 tree trims.







## RW\_V\_4613\_14

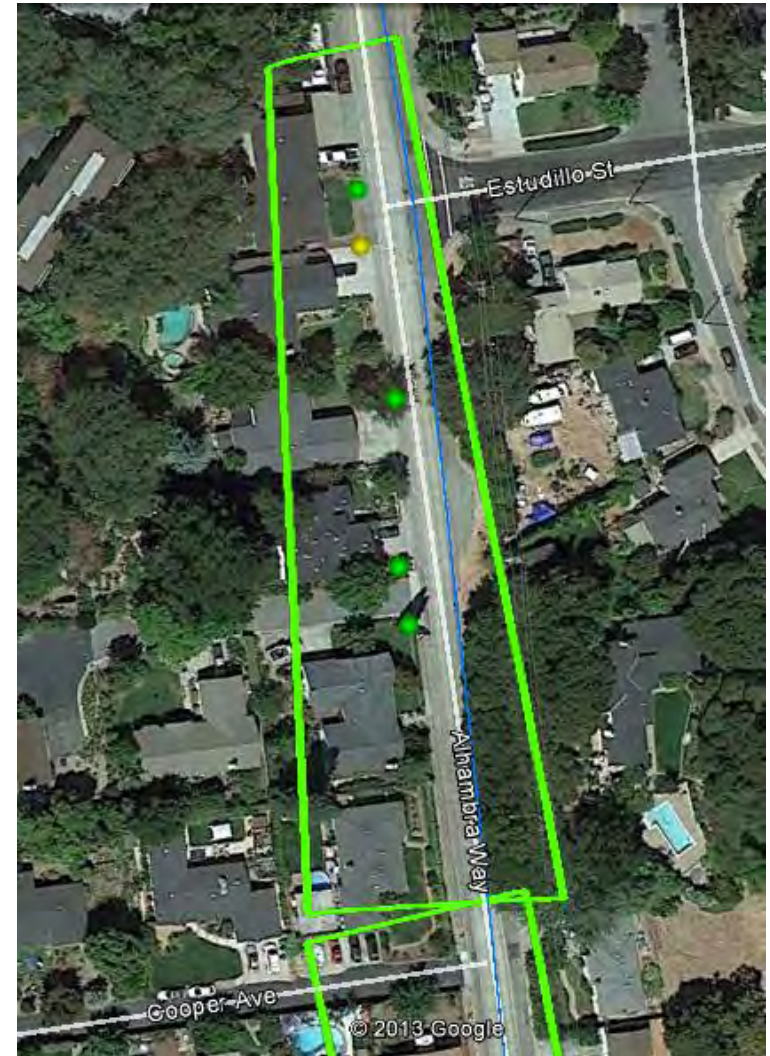
**Project Location:** Alhambra Way between Cooper Ave. and Estudillo St.

**Area Description:** Trees and brush unit along residential property.

**Scope of Work:** Trees and brush unit for removal. Traffic control needed.

**Equipment Needed:**

**Removals:** 4 trees, 1 unit of brush.







## RW\_V\_4615\_14

**Project Location:** Alhambra Way just east of Alhambra Ave.

**Area Description:** Trees and brush unit buffering road.

**Scope of Work:** Trees and brush unit for removal. Traffic control needed.

**Equipment Needed:**

**Removals:** 14 trees, 1 unit of brush.



Google earth



- Tree
- Trim
- Brush

## RW\_V\_4618\_14

**Project Location:** Corner of Alhambra Way and Alhambra Ave.

**Area Description:** Trees buffering road.

**Scope of Work:** Trees for removal. Traffic control needed.

**Equipment Needed:**

**Removals:** 3 trees.





## RW\_V\_4617\_14

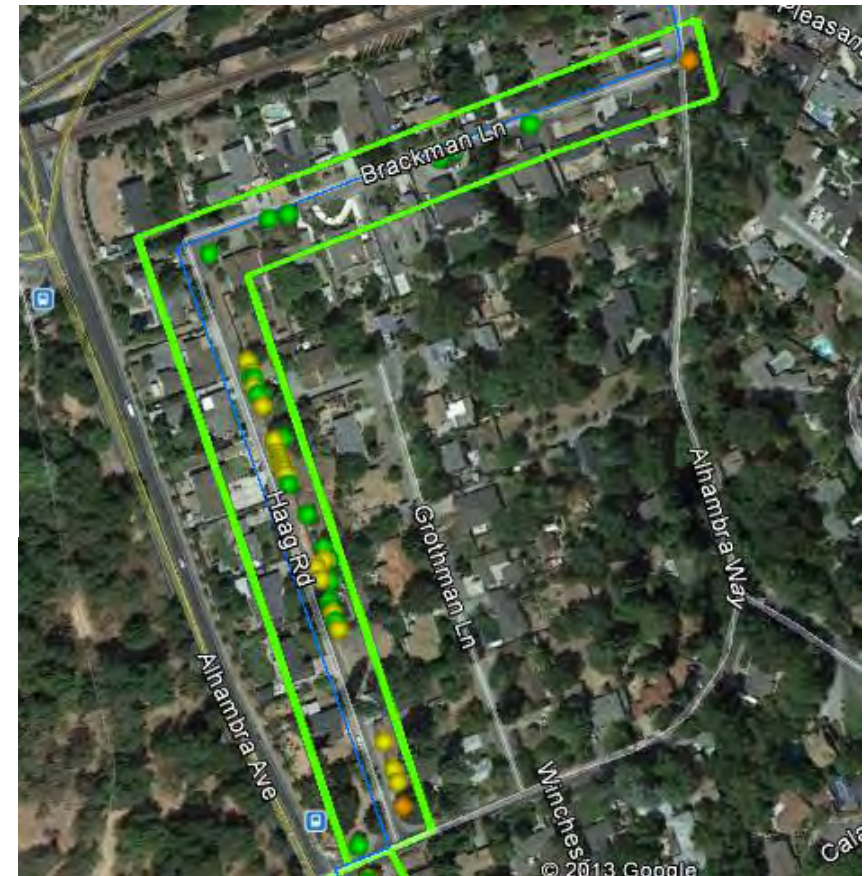
**Project Location:** Brackman Ln. to Haag Rd.

**Area Description:** Trees and brush units along residential property.

**Scope of Work:** Trees and brush units for removal, trees for trimming. Traffic control needed.

**Equipment Needed:**

**Removals:** 19 trees for removal, 19 units of brush for removal, and 2 trees for trimming.





## RW\_V\_4617\_14

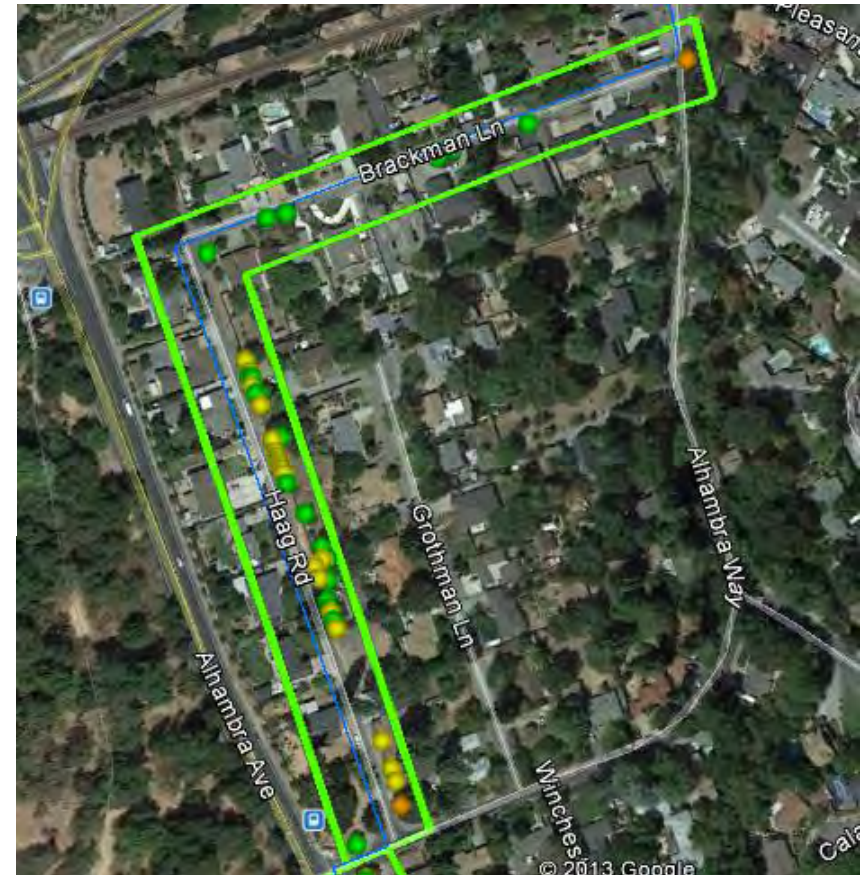
**Project Location:** Brackman Ln. to Haag Rd.

**Area Description:** Trees and brush units along residential property.

**Scope of Work:** Trees and brush units for removal, trees for trimming. Traffic control needed.

**Equipment Needed:**

**Removals:** 19 trees for removal, 19 units of brush for removal, and 2 trees for trimming.







## RW\_V\_4605\_14

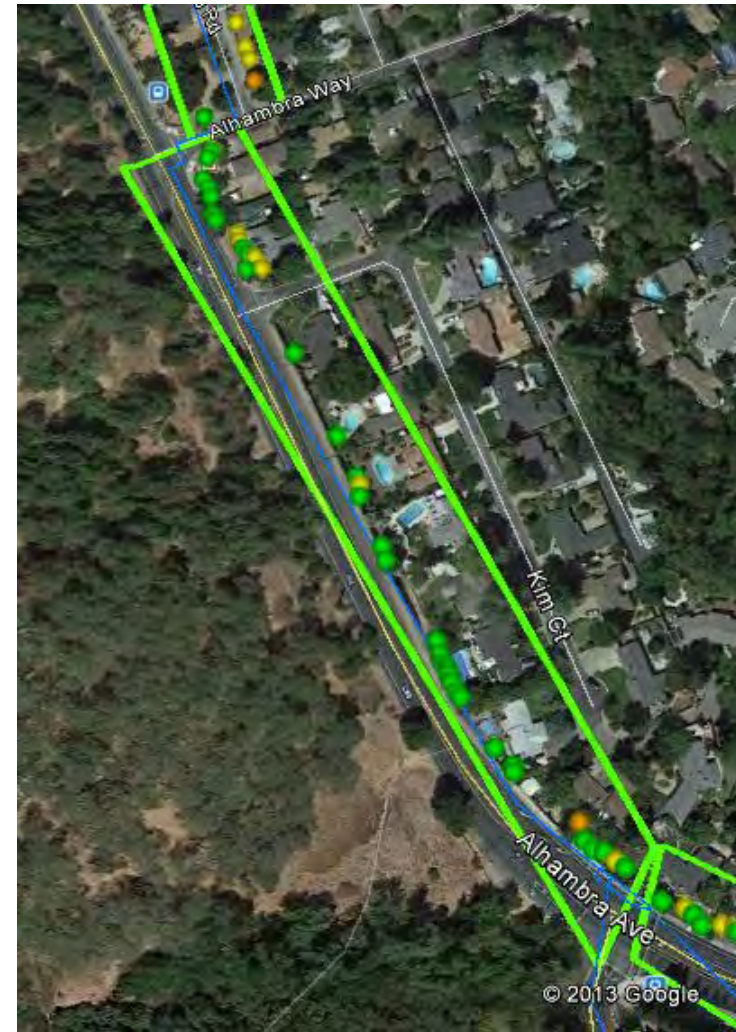
**Project Location:** Alhambra Ave. between Alhambra Way and Alhambra Valley Rd.

**Area Description:** Trees and brush units in backyards along Alhambra Ave.

**Scope of Work:** Trees and brush units for removal, trees for trimming. Traffic control needed.

**Equipment Needed:**

**Removals:** 32 trees for removal, 7 units of brush, 1 tree for trimming.





## RW\_V\_4607\_14

**Project Location:** Phylis Terrace between Alhambra Valley Road and Travers Dr.

**Area Description:** Trees and brush units buffering residential property and road.

**Scope of Work:** Trees and brush units for removal, trees for trimming. Traffic control needed.

**Equipment Needed:**

**Removals:** 38 trees for removal, 8 units of brush for removal, 3 trees for trimming.







RW\_V\_4620\_14

**Project Location:**

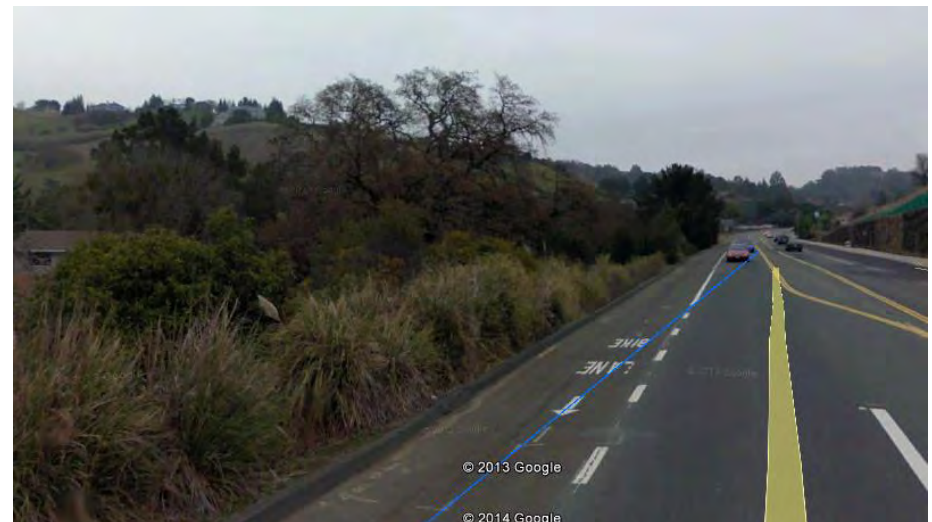
Alhambra Ave. east of Travers Dr.

**Area Description:** Trees and brush units along road.

**Scope of Work:** Trees and brush units for removal, trees for trimming. Traffic control needed.

**Equipment Needed:**

**Removals:** 67 trees for removal, 43 units of brush for removal, 1 tree for trimming.





RW\_V\_4621\_14

**Project Location:**

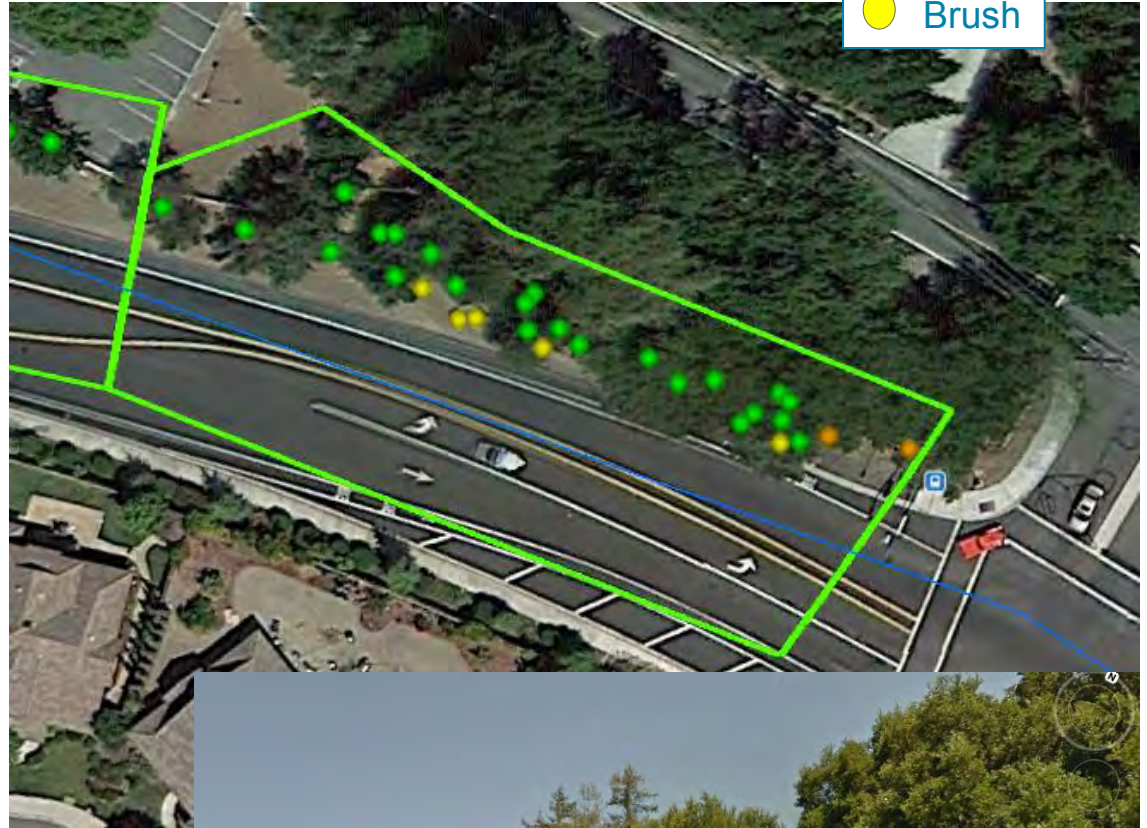
Alhambra Ave. and John Muir Rd.

**Area Description:** Trees and brush units along road.

**Scope of Work:** Trees and brush units for removal, trees for trimming. Traffic control needed.

**Equipment Needed:**

**Removals:** 23 trees for removal, 5 units of brush for removal, 2 trees for trimming.





**RW\_V\_4628\_14**

**Project Location:** Alhambra Ave.  
between John Muir Rd. and Forest  
Way.

**Area Description:** Tree and brush  
unit in median and street.

**Scope of Work:** Tree and brush unit  
for removal.

**Equipment Needed:**

**Removals:** 1 tree, 1 unit of brush.



## RW\_V\_4610\_14

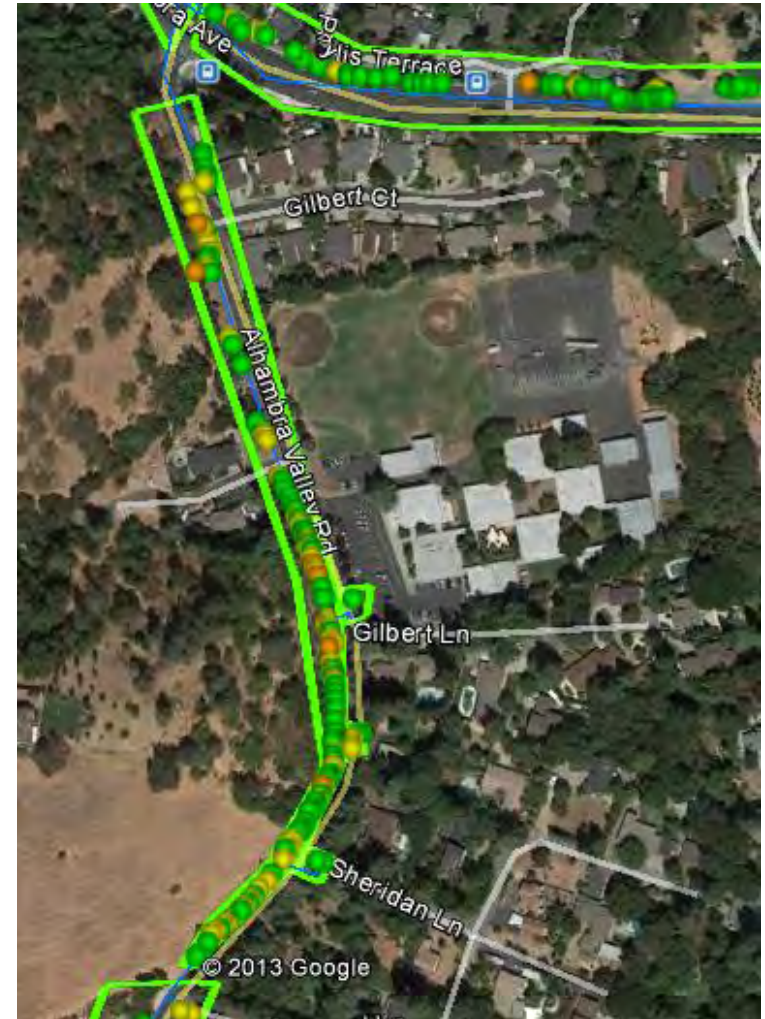
**Project Location:** Alhambra Valley Road south of Alhambra Ave. to Strenzel Way.

**Area Description:** Trees and brush units for removal and trim along road buffering school, residential property, and open space.

**Scope of Work:** Trees and brush units for removal and trim. Traffic control needed.

**Equipment Needed:**

**Removals:** 76 trees, 47 units of brush, 6 tree trims.







RW\_V\_4625\_14

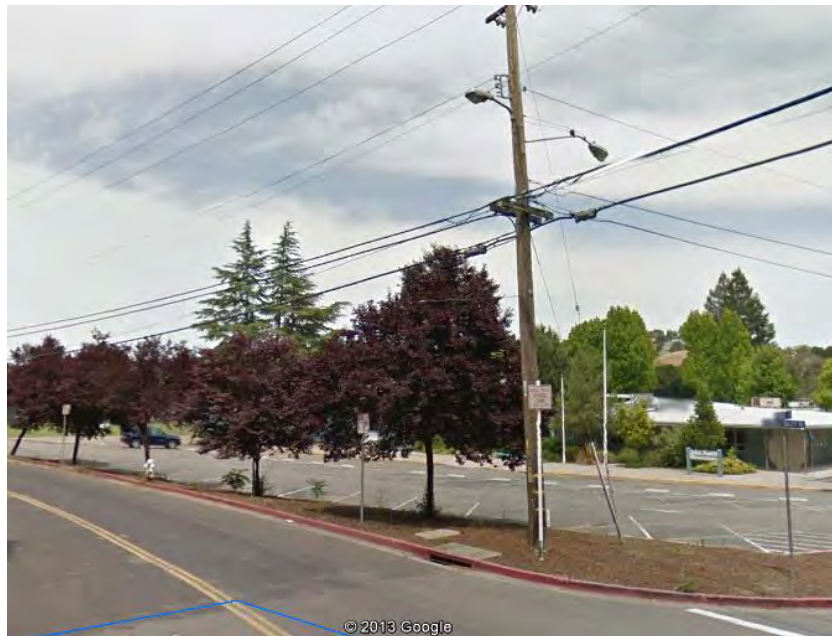
**Project Location:** Corner of Alhambra Valley Way and Gilbert Lane.

**Area Description:** Tree for removal buffering school and road. Traffic control needed.

**Scope of Work:** Tree for removal

**Equipment Needed:**

**Removals:** 1 tree.





**RW\_V\_4624\_14**

**Project Location:** 4991 Alhambra Valley Road.

**Area Description:** Trees and brush units for removal in backyard.

**Scope of Work:** Trees and brush for removal. Traffic control needed.

**Equipment Needed:**

**Removals:** 2 trees, 4 units of brush.







## RW\_V\_4623\_14

**Project Location:** 4997 Alhambra Valley Road.

**Area Description:** Trees for removal in backyard.

**Scope of Work:** Trees for removal.  
Traffic control needed.

**Equipment Needed:**

**Removals:** 2 trees.





## RW\_V\_4609\_14

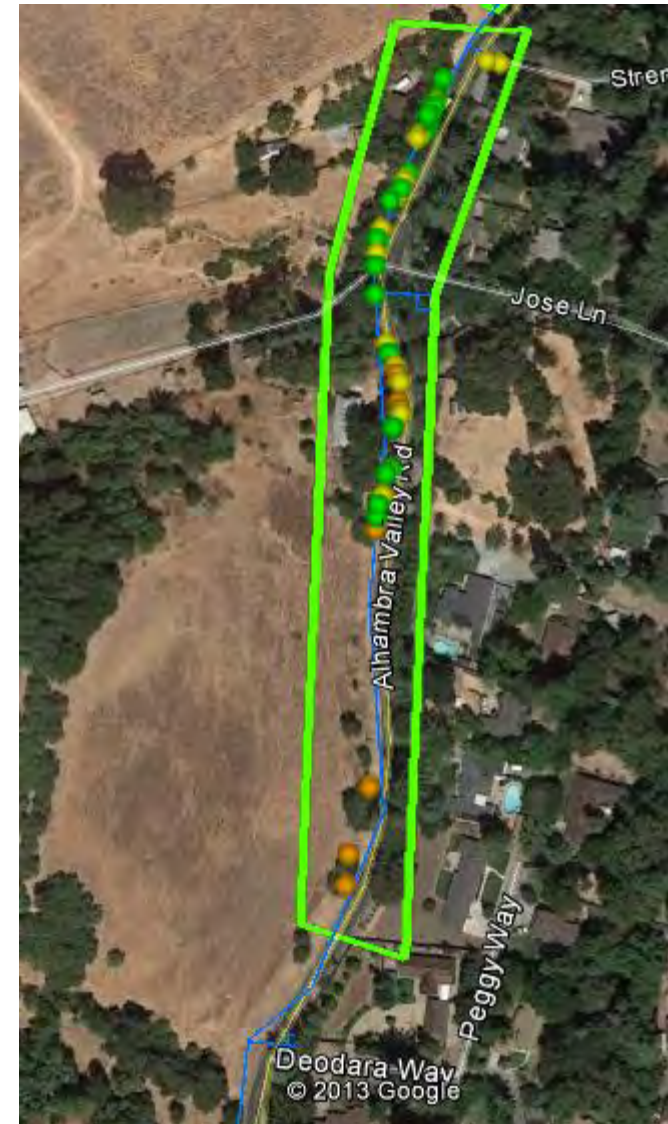
**Project Location:** Alhambra Valley Road from Strenzel Lane to Deodara Way.

**Area Description:** Trees and brush units for removal, trees for trimming along road and open space.

**Scope of Work:** Trees and brush units for removal, trees for trimming. Traffic control needed.

**Equipment Needed:**

**Removals:** 26 trees for removal, 15 units of brush for removal, 7 trees for trimming.





# Thank You

